



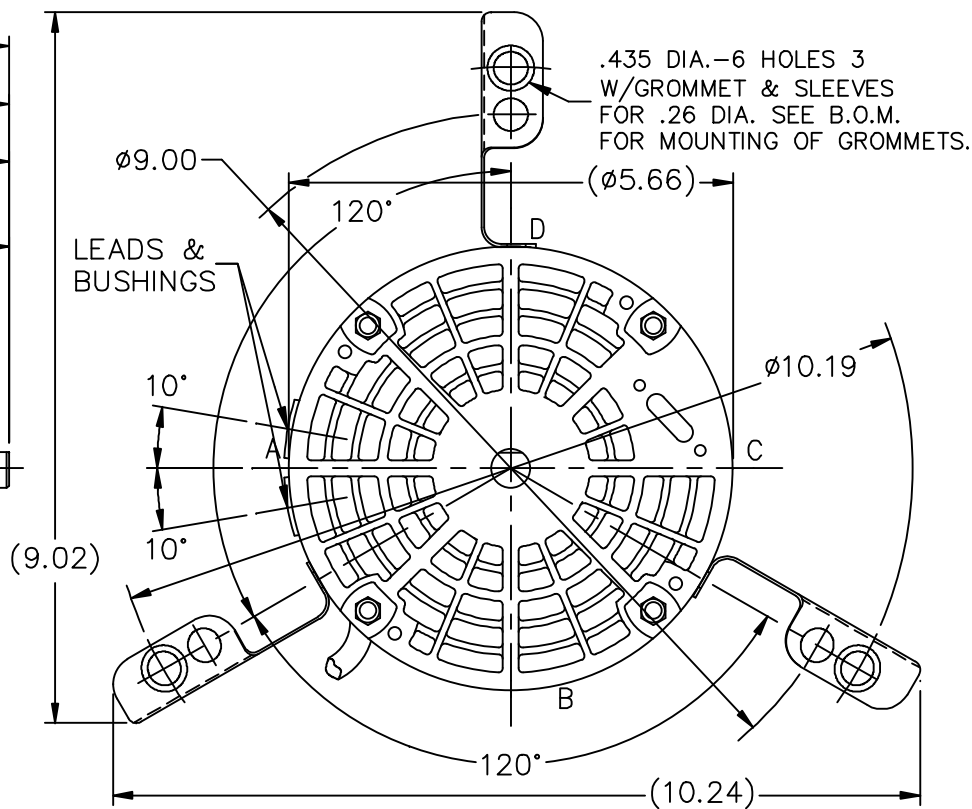
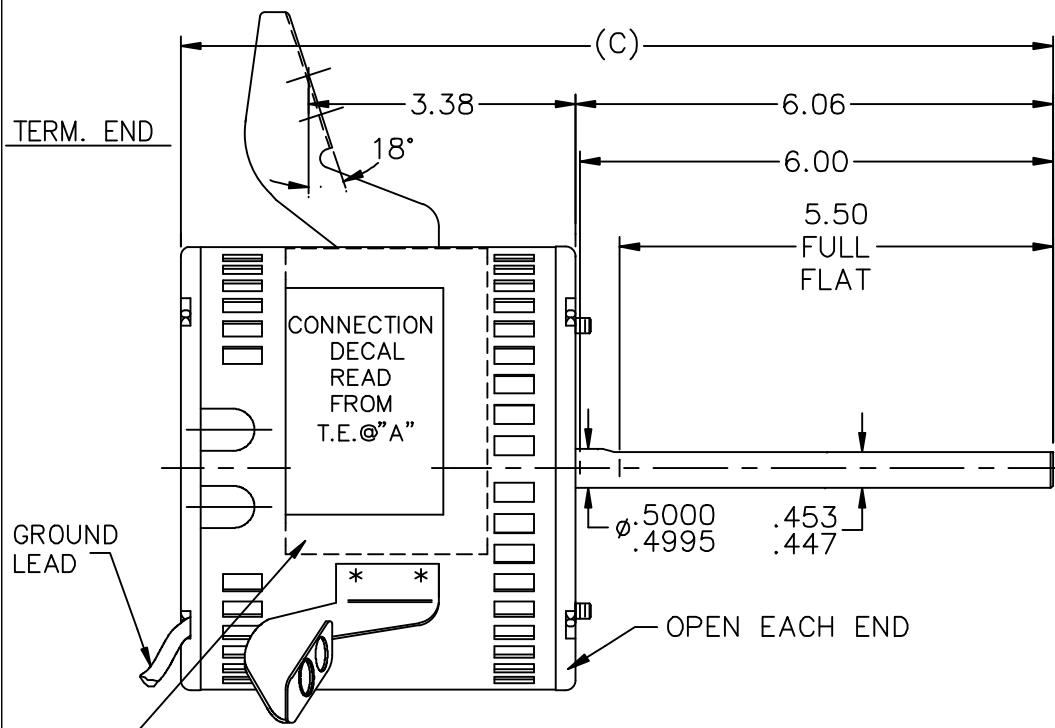
**Nameplate Specifications**

Output HP	<b>0.50 Hp</b>	Output KW	<b>0.37 kW</b>
Frequency	<b>60 Hz</b>	Voltage	<b>115 V</b>
Current	<b>6.0 A</b>	Speed	<b>1075 rpm</b>
Service Factor	<b>1</b>	Phase	<b>1</b>
Efficiency	<b>64 %</b>	Duty	<b>Continuous</b>
Insulation Class	<b>B</b>	Design Code	<b>NO DESIGN CODE</b>
KVA Code	<b>C</b>	Frame	<b>48Z</b>
Enclosure	<b>Open Air Over</b>	Overload Protector	<b>Automatic Lock Rotor Only</b>
Ambient Temperature	<b>40 °C</b>	Drive End Bearing Size	<b>6203</b>
Opp Drive End Bearing Size	<b>6203</b>	UL	<b>Recognized</b>
CSA	<b>Y</b>	CE	<b>N</b>
IP Code	<b>10</b>		

**Technical Specifications**

Electrical Type	<b>Permanent Split Capacitor</b>	Starting Method	<b>Across The Line</b>
Poles	<b>6</b>	Rotation	<b>Selective Counterclockwise</b>
Mounting	<b>Three Lug Mount</b>	Motor Orientation	<b>Horizontal</b>
Drive End Bearing	<b>Ball</b>	Opp Drive End Bearing	<b>Ball</b>
Frame Material	<b>Rolled Steel</b>	Shaft Type	<b>Single Special Extension</b>
Overall Length	<b>11.06 in</b>	Frame Length	<b>4.50 in</b>
Shaft Diameter	<b>0.500 in</b>	Shaft Extension	<b>6.06 in</b>
Assembly/Box Mounting	<b>F1 Only</b>		
Outline Drawing	<b>A-SS403891-450</b>	Connection Diagram	<b>6906500</b>

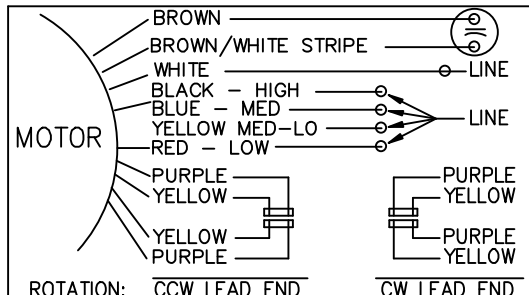
**This is an uncontrolled document once printed or downloaded and is subject to change without notice. Date Created: 10/08/2018**



N.P. LOC'D @ 45° CW OF 'C' READ FROM T.E. WHEN TWO PIECE N.P. IS USED LOCATE 1/2" ON EACH SIDE OF LUG

LEAD DESCRIPTION:

- 1 WHITE, 1 BLACK, 1 YELLOW, 1 BLUE, & 1 RED LEAD WITH .50 BARE WIRE STRIP. 30.00" LONG.
- 2 BROWN LEADS WITH .25 FLAG-TYPE QUICK CONNECTS, 30.00" LONG. BROWN/WHITE MARKED LEAD IS COMMON TO WHITE.
- REVERSING LEADS ARE MOLDED INTO MATING PULL-APART PLUGS. 1 YELLOW & 1 PURPLE LEAD PER PLUG. 5.00" LONG.
- GREEN LEAD WITH TERM. FOR #10 SCREW 12.00" LONG.



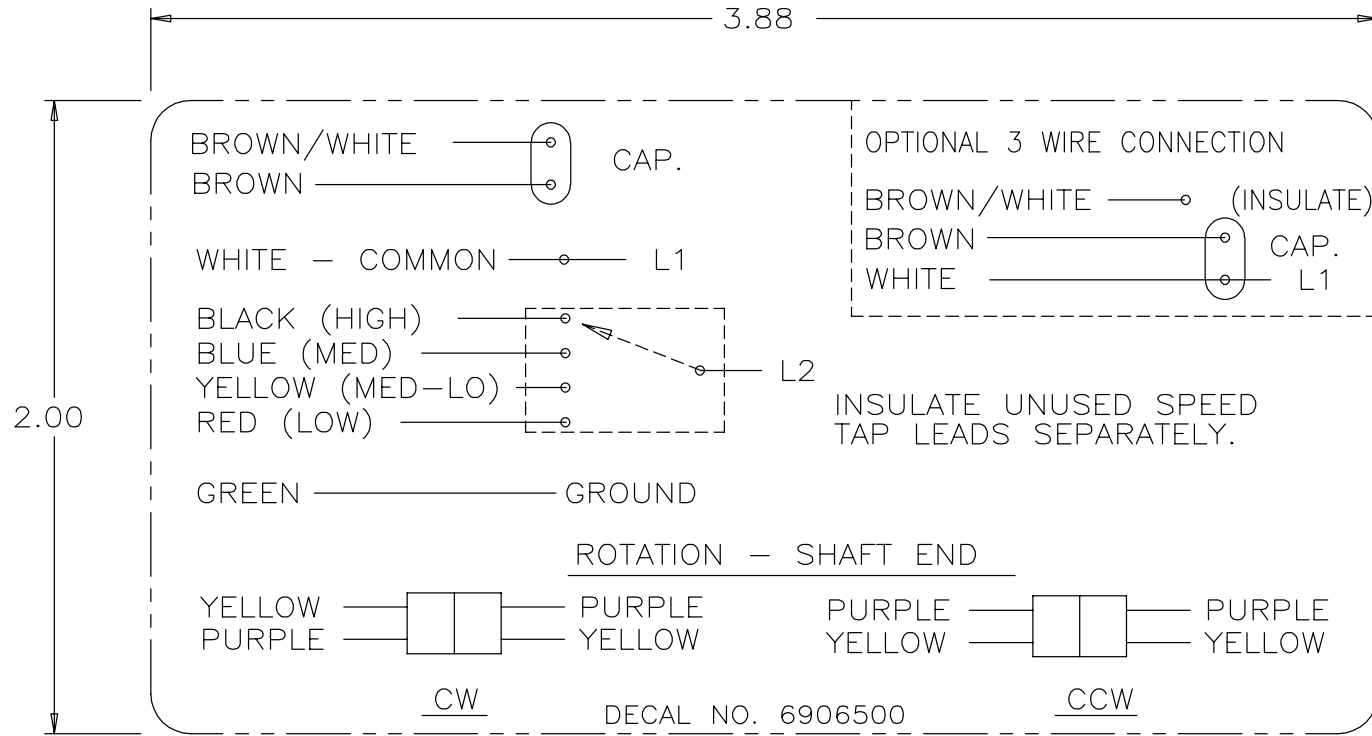
DASH	FR	C
375	48	10.31
400	48	10.56
425	48	10.81
450	48	11.06

11/30/2011

				TOLERANCES UNLESS SPECIFIED		MARATHON ELECTRIC	DRAWN AD 12/29/09			
				DEC.	INCHES		CHK NB 12/29/09			
				.X	±.1	TITLE OUTLINE	APPD NB 12/29/09			
				.XX	±.03		SCALE 13=32			
				.XXX	±.005		REF SS403519			
				.XXXX	±.0005		FMF			
NO.	REVISION			BY & DATE	CHK	ANG	±7'30"	FINISH	PREV	
				RFP		12/29/09		CAD FILE SS403891		
				DIST	WP			SIZE A	DRAWING NO. SS403891	
								PAGE	OF	REV.

THIS DRAWING IN DESIGN AND DETAIL IS OUR PROPERTY AND MUST NOT BE USED EXCEPT IN CONNECTION WITH OUR WORK ALL RIGHTS OF DESIGN AND INVENTION ARE RESERVED THIS IS AN ELECTRONICALLY GENERATED DOCUMENT - DO NOT SCALE THIS PRINT

6906500



				TOLERANCES UNLESS SPECIFIED		DRAWN MRB 04-16-1998	
				DEC.	INCHES	REGAL-BELOIT <i>Motor Technologies</i> CHK ML 04-22-1998	
4	UPDATED PER ECO-0059627	PST 09/08/2014	PI	.X	±.1	APPD GK 04-22-1998	
3	REMOVED 'MARATHON ELECTRIC' CN 35106	DRS 05-01-2002	TOM	.XX	±.02	SCALE 1=1	
2	PART NAME WAS CONNECTION DIAGRAM CN 25669	MRB 04-23-1998		.XXX	±.005	REF	
1	NEW DRAWING CN 25669	MRB 04-22-1998		.XXXX	±.0005	MAT'L.	
NO.	REVISION	BY & DATE	CHK	ANG	±	FINISH	
THIS DRAWING IN DESIGN AND DETAIL IS OUR PROPERTY AND MUST NOT BE USED EXCEPT IN CONNECTION WITH OUR WORK ALL RIGHTS OF DESIGN AND INVENTION ARE RESERVED THIS IS AN ELECTRONICALLY GENERATED DOCUMENT - DO NOT SCALE THIS PRINT			RFP	CAD FILE 6906500		SIZE	DRAWING NO. PAGE OF REV.
			DIST	WP		A	6906500 4

